



401 South Grand Ave., Santa Ana, CA 92705
Tel: 714.550.6070 Fax: 714.550.9661 www.twobros.com



VALE ADAPTER KIT

Part # 005-2-1-V



Parts List

Qty.	Description	Part Number
1	V.A.L.E. Adapter AL Collar	005-2-1-C
2	V.A.L.E. Adapter SS Spring Hooks	005-2-1-H
1	M2 VALE X-ring	005-7-2-2
4	6x14mm Socket Head Cap Screw	005-SH614
4	M6 Split Lock Washer	005-WL6
1	5mm Long Handle Ball End Hex Wrench	005-9-18610

IMPORTANT - PLEASE READ CAREFULLY

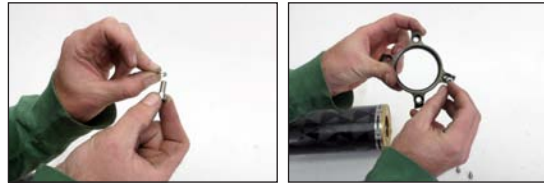
We recommend that this performance part be installed by a qualified technician. If you have any doubts as to your ability to install this performance part, please consult with your local TrophyKart dealer. Read all instructions first before starting installation. Make sure the kart and exhaust system are completely cool before starting the installation. Also, make sure the kart is secure during installation. Be sure to save all stock components for possible use later.

Warranty

Two Brothers Racing products are intended for closed course competition purposes only, and therefore are sold "as is" without warranty. Two Brothers Racing specifically disclaims any warranties of merchantability or fitness for a particular purpose and disclaims all responsibility for consequential and incidental damages or any other losses arising from the use of these products or parts.

Installation Instructions

1. This kit is a spring hook to V.A.L.E. adapter.
2. You will need to install the aluminum V.A.L.E. ring to the muffler using the contents of this kit as shown.



3. The X-Lite Ring should be secured with the 4 6x14mm socket head cap screws and lock washers provided with the hook clips between X-Ring and V.A.L.E. adapter.



4. The hook clips will be loose until the spring tension is applied.



5. Slip exhaust tube into V.A.L.E. adapter and attach springs.



Care & Cleaning

Care & Cleaning

Keep system free of dirt and moisture. Store in a cool, dry place. Make sure vehicle is completely cool before maintenance.

Stainless Header System: Polished stainless steel pipes will turn a light golden hue after a few heat cycles, this is a normal characteristic of high quality stainless steel. Clean using a mild water based spray cleaner. Always apply cleaner or polish with a soft, clean cloth.

Titanium Header System: Polished titanium pipes will experience color shift ranging from deep blue/purple through amber after a few heat cycles. This is a normal characteristic of high quality titanium. Clean using a mild water based spray cleaner. Always apply cleaner or polish with a soft, clean cloth.

Polished Aluminum Canisters: Use an aluminum or mag wheel polish to restore the bright finish to factory spec.

Brushed Aluminum Canisters: Clean using a mild water based spray cleaner. Always apply cleaner or polish with a soft, clean cloth.

Carbon Fiber Canisters: Clean using a mild water based spray cleaner. Always apply cleaner or polish with a soft, clean cloth. Always make sure the fiberglass packing inside is in good condition and not burned out, as exhaust heat inside an empty canister will deteriorate the carbon fiber sleeve. TBR sells repack kits (Road - #005-10038, Offroad - #005-10038MX) that include everything you need to easily do it yourself.

Titanium Mufflers: For cleaning use a mild water based spray cleaner. Always apply cleaner or polish with a soft, clean cloth. Always make sure the fiberglass packing inside is in good condition and not burned out, as exhaust heat inside an empty canister will deteriorate the carbon fiber sleeve. TBR sells repack kits (Road - #005-10038, Offroad - #005-10038MX) that include everything you need to easily do it yourself.

Repack all road canisters at the first signs of packing material deterioration. Part #005-10038 Repack all offroad canisters after every 10 hours of use. Part #005-10038MX

NEVER dyno test your bike with carbon fiber or titanium canisters installed - the intense heat and lack of cooling air can quickly burn through the canister material. Two Brothers Racing does not provide a warranty for burned canisters.